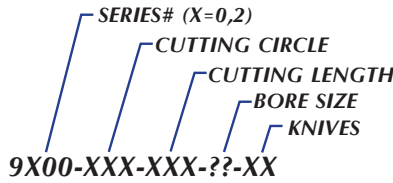


# terminus



## 9000 & 9200 SERIES



BORE	??
1-1/4"	31
35mm	35
1-1/2"	38
40mm	40
1-13/16"	46
2-1/8"	54

**Terminus is now American Made**

Standard Items are made with 15° Hook

Part Number	Cutting Circle		Cutting Length		Bore Diameter	Knives
	mm	inch	mm	inch		
9X00-100-030-??-02	100	3.937	30	1.181		2
9X00-100-050-??-02	100	3.937	50	1.969		2
9X00-100-080-??-02	100	3.937	80	3.150		2
9X00-100-100-??-(04)(42)	100	3.937	100	3.937	1-1/4" 35mm 1-1/2"	2, 4+2
9X00-100-120-??-04	100	3.937	120	4.724	40mm	4
9X00-100-150-??-04	100	3.937	150	5.906		4
9X00-100-160-??-04	100	3.937	160	6.299		4
9X00-100-230-??-(04)(42)	100	3.937	230	9.055		4, 4+2
9X00-125-030-??-04	125	4.921	30	1.181		4
9X00-125-050-??-04	125	4.921	50	1.969		4
9X00-125-060-??-04	125	4.921	60	3.150		4
9X00-125-100-??-(04)(42)	125	4.921	100	3.937		4, 4+2
9X00-125-120-??-04	125	4.921	120	4.724		4
9X00-125-130-??-(04)(42)	125	4.921	130	5.118	1-1/4" 35mm	4, 4+2
9X00-125-150-??-(04)(42)	125	4.921	150	5.906	1-1/2" 40mm	4, 4+2
9X00-125-160-??-04	125	4.921	160	6.299	1-13/16"	4
9X00-125-180-??-04	125	4.921	180	7.087		4
9X00-125-200-??-04	125	4.921	200	7.874		4
9X00-125-230-??-(04)(42)	125	4.921	230	9.055		4, 4+2
9X00-125-240-??-04	125	4.921	240	9.449		4
9X00-125-250-??-04	125	4.921	250	9.843		4
9X00-140-030-??-04	140	5.512	30	1.181		4
9X00-140-050-??-04	140	5.512	50	1.969		4
9X00-140-060-??-04	140	5.512	60	3.150		4
9X00-140-100-??-(04)(42)	140	5.512	100	3.937		4, 4+2
9X00-140-120-??-04	140	5.512	120	4.724		4
9X00-140-130-??-(04)(42)	140	5.512	130	5.118	1-1/4" 35mm	4, 4+2
9X00-140-150-??-(04)(42)	140	5.512	150	5.906	1-1/2" 40mm	4, 4+2
9X00-140-160-??-04	140	5.512	160	6.299	1-13/16"	4
9X00-140-180-??-04	140	5.512	180	7.087	2-1/8"	4
9X00-140-200-??-04	140	5.512	200	7.874		4
9X00-140-230-??-(04)(42)	140	5.512	230	9.055		4, 4+2
9X00-140-240-??-04	140	5.512	240	9.449		4
9X00-160-100-??-(04)(42)	160	6.299	100	3.937		4, 4+2
9X00-160-230-??-(04)(42)	160	6.299	230	9.055		4, 4+2

**NEW**

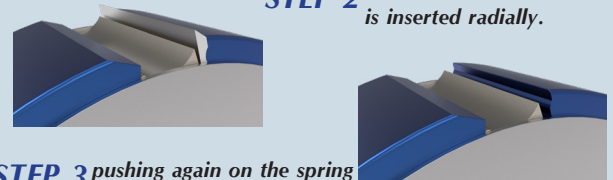
**Lower Pricing**

**Solid aluminum alloy construction  
Reduces stress on machine  
spindles and bearings**

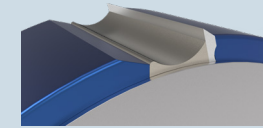
**Quick Change  
Knife Changing Procedure**

**STEP 1** Push down on the spring gib and remove the knife radially

**STEP 2** The turned or new knife is inserted radially.



**STEP 3** pushing again on the spring loaded gib, the knife is precisely seated on the self-locating ridge.



**In addition to hundreds of standard items in-stock and ready for immediate shipment from our facilities, we also offer custom tooling design and manufacturing services.**

**We can sharpen your Terminus and other manufacturer's double sided HSS and Carbide knives!  
1/2 the price of buying new knives!**

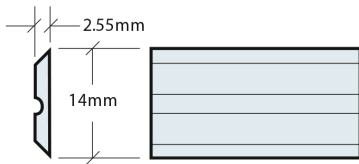
**HIGH DEFINITION TOOLING H3D**  
H3D TOOL CORP.

**Ohio**  
1-740-498-5181  
295 Enterprise Drive  
Newcomerstown, OH 43832

**North Carolina**  
1-828-397-2467  
1968 High Definition Dr  
Connelly Springs, NC 28612

**PLANING@H3DTOOL.COM**  
**www.terminus-stl.com**

# Change to Quick Change

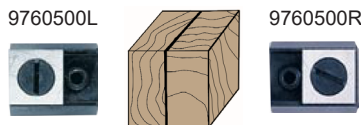


Knives can be surface ground to a minimum of 2.45mm thickness.

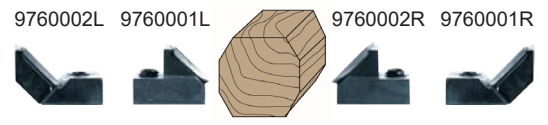
**1-888-544-3726**

Length	CARBIDE	HSS (T1)
50	4-54-0252	5-59-00102
60	4-54-0253	5-59-00103
80	4-54-0254	5-59-00104
100	4-54-0255	5-59-00105
110	4-54-0256	5-59-00106
120	4-54-0257	5-59-00107
130	4-54-0258	5-59-00108
136	4-54-0259	5-59-00109
140	4-54-0260	5-59-00110
150	4-54-0261	5-59-00111
160	4-54-0262	5-59-00112
170	4-54-0263	5-59-00113
180	4-54-0264	5-59-00114
190	4-54-0265	5-59-00115
200	4-54-0266	5-59-00116
210	4-54-0267	5-59-00117
220	4-54-0268	5-59-00118
230	4-54-0269	5-59-00119
240	4-54-0270	5-59-00120
250	4-54-0271	5-59-00121

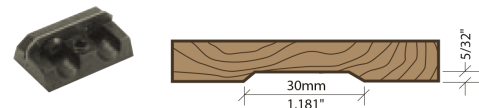
## GLUE LINE KNIVES - CARBIDE INSERT



## 450 BEVELING KNIVES - CARBIDE INSERT



## BACKOUT/RELIEF HOLDERS AND CARBIDE KNIVES



9760701 - Backout/Relief (Complete with inserts)  
9760713 - Carbide Inserts (Sold 10 per box)

## BEADING HOLDERS AND CARBIDE INSERTS



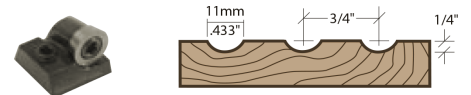
9760702 - Beading (Complete with inserts)  
9760714 - Beading Carbide Inserts (Sold 10 per box)

## "V" GROOVE HOLDERS AND CARBIDE INSERTS



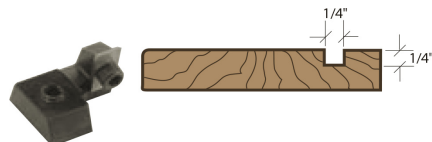
9760703 - "V" Groove (Complete with inserts)  
9760715 - "V" Groove Carbide Inserts (Sold 10 per box)

## FLUTING HOLDERS AND CARBIDE INSERTS

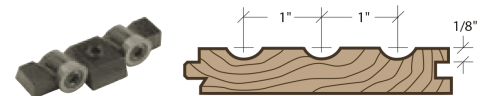


9760705 - Fluting (Complete with inserts)  
9760613 - Fluting Carbide Inserts (Sold 10 per box)

## GROOVING HOLDERS AND CARBIDE INSERTS BACKOUT/RELIEF HOLDERS AND CARBIDE INSERTS



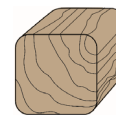
9760704 - Grooving - 1/4" k x 1/4" d (Complete with inserts)  
9760716 - Grooving Carbide Inserts (Sold 10 per box)



9760601 - Single Cut (Complete with inserts)  
9760602 - Double Cut (Complete with inserts)  
9760613 - Backout/Relief Carbide Inserts  
9760614 - Backout/Relief Insert Screws

## EDGE CONCAVE KNIVES - CARBIDE INSERT

Holder/Insert	Insert	Radius
9760403L	9760413L	R3 mm
9760404L	9760414L	R4 mm
9760405L	9760415L	R5 mm
9760406L	9760416L	R6 mm
9760408L	9760418L	R8 mm



Holder/Insert	Insert	Radius
9760403R	9760413R	R3 mm
9760404R	9760414R	R4 mm
9760405R	9760415R	R5 mm
9760406R	9760416R	R6 mm
9760408R	9760418R	R8 mm



Terminus Products are now

- American Made
- Priced lower
- Larger inventory of stock items
- Better proprietary grade of Carbide offering 30% - 100% longer run time

**"Change to Quick Change"**